

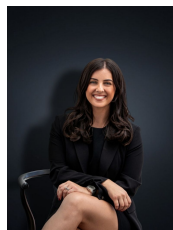


1/9 Vaina Street WERRIBEE VIC

3  1  1 

Desirably located in a central pocket of Werribee, this very low maintenance home offers loads of opportunities and is perfect for first home buyers and investors alike. This beautifully kept home is situated close by to Primary & Secondary schools, Sporting clubs, local shops, Werribee River walking trails and public transport (Werribee Train station less than a 5 minute drive from the property). This home is sure to impress and will tick all of the boxes for you to move straight in! This home has everything you need and offers:

Land Size : 311 sqm
View : <https://www.ypa.com.au/7360711>



Kirsty Cunningham
0414 344 475

- Three large fitted bedrooms
- Central bathroom
- Open plan family kitchen and meals area
- Kitchen with stainless steel appliances and dishwasher
- Single Garage
- Ducted heating and evaporative cooling
- Alarm system