



54 Kinglake Drive WYNDHAM VALE VIC

4  2  2 

Located in the up and coming Manor Lakes estate this home has WOW factor from the minute you arrive. With manicured gardens front and back the established home is ready for any growing family to move straight in! Within close proximity to schools, shopping centres & the Wyndham Vale train station the location certainly ticks all of the boxes. Only six years young the home offers:

Master bedroom with walk in robe and ensuite

Remaining rooms are all oversized and have built in robes

Formal lounge

Open plan kitchen/meals and family living space

Large hostess kitchen with stainless steel appliances, dishwasher and loads of cupboard space including a double pantry

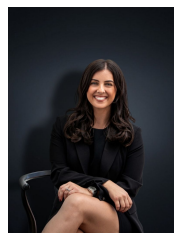
Quality fittings include: ducted heating, ceiling fans, split system reverse cycle unit, floating floorboards throughout

Double garage with internal access

Building Size : 24 sqm

Land Size : 448 sqm

View : <https://www.ypa.com.au/7360717>



Kirsty Cunningham
0414 344 475