



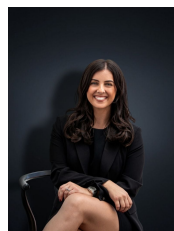
## 23 Millewa Way WYNDHAM VALE VIC

3 2 1

Come and have a look at this wonderful home in a central pocket of Wyndham Vale. Located within walking distance to Iramoo Primary school, a short distance to Eagle stadium and also within close proximity to Presidents Park, local shops, public transport and the Wyndham Vale train station. With this location, the kids will be entertained for hours on end. This home has numerous features to talk about, its space being one of them. With all the bells and whistles this property contains:

**Building Size** : 16 sqm  
**Land Size** : 534 sqm  
**View** : <https://www.ypa.com.au/7360731>

- Three spacious bedrooms
- Master bedroom with en suite and walk in robe
- Formal lounge with adjacent dining area
- Open plan kitchen and family meals arrangement
- Stainless steel appliances & dishwasher
- Evaporative cooling and ceiling fans
- Gas wall furnace



**Kirsty Cunningham**  
**0414 344 475**