



11 Bolger Crescent HOPPERS CROSSING VIC

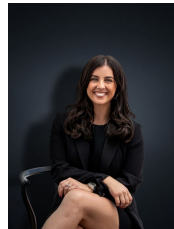
3  1  2 

This one of a kind property is being offered to the market by the original owners for the very first time! Located in the central Mossfiel estate within close proximity to Pacific Werribee Shopping center & Hoppers Crossing Train Station. Situated on a generous 580 sq. block the home offers three exceptionally large living areas and considerable advantages with the flexibility to add additional bedrooms upstairs or simply keep it as is. This well-kept home is screaming with potential and has been beautifully updated throughout and is ready for you to move straight in! Additional features include:

- 3 generous bedrooms
- Central renovated bathroom
- Formal lounge upon entry
- Kitchen / meals arrangement
- Kitchen equipped with stainless steel appliances and dishwasher

Land Size : 580 sqm

View : <https://www.ypa.com.au/7360732>



Kirsty Cunningham
0414 344 475