



6 Harris Avenue HOPPERS CROSSING VIC

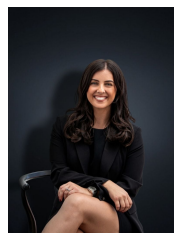
3 2 2

Investors, 1st home buyers take note of this fantastic property positioned beautifully within very close proximity to schools, Mossfiel reserve, Pacific Werribee shopping centre, Hoppers Crossing station, Aqua Pulse/Encore events centre and all amenities.

- Three fitted bedrooms, separate shower room next door to the main bedroom
- Central bathroom
- Beautiful timber floors through out
- Modern kitchen with abundance of space
- Ducted heating and wall air conditioning
- Side access through to a double garage
- Timber decked area and matured landscaped gardens

The location speaks for itself Mossfiel Estate being the hottest property in Wyndham and the most central part of

Building Size : 14 sqm
Land Size : 545 sqm
View : <https://www.ypa.com.au/7360749>



Kirsty Cunningham
0414 344 475