

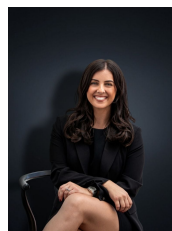


10 Bunyip Court WERRIBEE VIC

4 2 2

Situated in a central Werribee position this comfortable family home is within walking distance to schools, local shops, public transport and only a short distance to many of Wyndhams most sought after attractions. Only a minutes away, Pacific Werribee, Italian Social Club, local sporting clubs, Werribee River & walking tracks and only a short drive to the Werribee CBD & Train station. The home has been renovated throughout and offers a very versatile and comfortable floor plan. Set on a large 642 sq m allotment (approx.) and offering numerous living zones the home entails:

Building Size : 17 sqm
Land Size : 642 sqm
View : <https://www.ypa.com.au/7360787>



Kirsty Cunningham
 0414 344 475

- Four bedrooms with built in robes
- Master with ensuite
- Large formal lounge
- Kitchen/ Meals area with quality appliances including dishwasher