



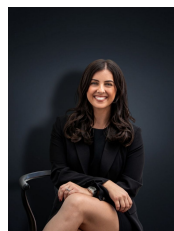
8 Hayden Street HOPPERS CROSSING VIC

3 1 1

If location is your main attraction then this is the property you must look to purchase! Located in the very popular Mossfiel estate, within close walking distance to Pacific Werribee, Mossfiel Primary School & Kindergarten, public transport, parklands, AquaPulse and Hoppers Crossing Train station only a short drive away! This large corner block measures approximately 584sq of prime Hoppers Crossing land. The home offers;

Building Size : 12 sqm
Land Size : 581 sqm
View : <https://www.ypa.com.au/7360814>

Three bedrooms
 Separate sunroom (potential use for a study or fourth bedroom)
 Central Bathroom
 Kitchen/ Meals area
 Massive family living arrangement
 Air conditioner



Kirsty Cunningham
 0414 344 475