

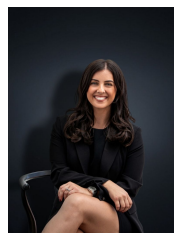
11 Hoddle Link WYNDHAM VALE VIC

3 2 2

Situated in an exciting pocket of Manor Lakes this instantly inviting home has been immaculately looked after ready for the next owners to move right on in! Ticking all the boxes this home offers everything you could ever ask for from space, entertainment zones and a top top location! Within only an 8 minute walk to the train station your commute to work has just become much easier, Manor Lakes College and Our Lady of the Southern Cross Primary School are both within walking distance and so is Manor Lakes Shopping centre. If convenience is important to you then look no further than this. The home offers:

- Three generous sized bedrooms
- Master with built in robes and en-suite
- Open plan kitchen/meals and family living arrangement
- Kitchen boasts stainless steel appliances, dishwasher and loads of cupboard space
- Large outdoor entertaining area with covered pergola and

Building Size : 18 sqm
Land Size : 400 sqm
View : <https://www.ypa.com.au/7360841>



Kirsty Cunningham
0414 344 475