



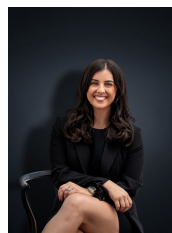
## 6 Melliodora Court WYNDHAM VALE VIC

4  2  1 

Presenting this very well-appointed family home in a dominant pocket of Manor Lakes within walking distance to Wyndham Vale train station, Manor Lakes Shopping Centre & Manor Lakes College and parklands, the location ticks all of the boxes. Situated on a large 512sq m allotment (approx.) the spacious family home with an open plan design offers:

**Building Size** : 23 sqm  
**Land Size** : 512 sqm  
**View** : <https://www.ypa.com.au/7360879>

- Four bedrooms
- Master with walk in robe and ensuite
- Remaining bedrooms all oversized & fitted with built in wardrobes
- Formal lounge upon entry
- Open plan kitchen /meals & family living arrangement
- Hostess kitchen fitted with recently updated stainless steel appliances, dishwasher & loads of cupboard space including a walk in pantry



**Kirsty Cunningham**  
0414 344 475