

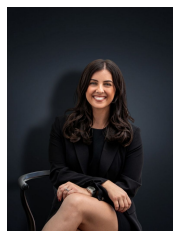


## 19 Cumming Drive HOPPERS CROSSING VIC

3  2  2 

Located in a premiere pocket of Hoppers Crossing where homes are hard to find this unique gem has been transformed to become your next family home! If lifestyle is important then this residence will deliver ease and comfort whilst still providing a spacious property with multiple entertaining zones! Located within the Mossfiel estate the home is within walking distance to Schools, gyms, parklands, Hogans corner shopping Centre and only 6 minutes to both Pacific Werribee and Hoppers Crossing train station! The home with its immaculate upgrades offers:

**Building Size** : 14 sqm  
**Land Size** : 626 sqm  
**View** : <https://www.ypa.com.au/7360892>



**Kirsty Cunningham**  
0414 344 475

- Three bedrooms
- Master with ensuite and walk in robe
- Large lounge/ adjacent dining area
- Central bathroom with spa bath
- Kitchen/meals area
- Quality stainless steel appliances including dishwasher