



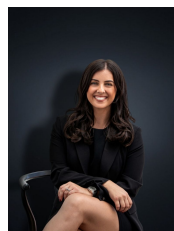
15 Seine Close WERRIBEE VIC

3 1 1

Contain your excitement for this vibrant Werribee home which is sure to put a smile on the next owners face and make you the envy of all of your friends! Spotless throughout, the home has many benefits one of them being the location. Within walking distance to Pacific Werribee, Bus Stops, Primary schools (Bethany Catholic Primary & Westgrove Primary) & Child care centers, Parklands and only a short drive to Werribee CBD & Railway station. The home situated in a quiet cul-de-sac offers loads of potential including:

- Three large bedrooms all with built in robes
- Kitchen/meals area with brand new appliances
- Massive living space upon entry
- Central bathroom
- Outdoor entertaining space
- Large backyard with side access
- Heating & cooling

Building Size : 15 sqm
Land Size : 454 sqm
View : <https://www.ypa.com.au/7360903>



Kirsty Cunningham
 0414 344 475