



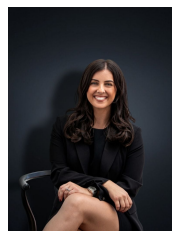
7 Smeaton Avenue HOPPERS CROSSING VIC

3  1  1 

This neat & tidy home is ready to find its next proud owners! In Hoppers Crossings most renowned estate Mossfiel this delightful property offers nothing but the best in positioning. Only 1.9km to Pacific Werribee, 2km to Hoppers Crossing Train station, walking distance to parks, local shops & reputable schools including Hoppers Crossing Secondary school, St Peters Primary School & Mossfiel Primary School, medical centers, kindergartens & sporting clubs the home is central to all amenities. The property situated on approximately 553 sq m offers:

Building Size : 14 sqm
Land Size : 553 sqm
View : <https://www.ypa.com.au/7360914>

- Three bedrooms with built in robes
- Central bathroom
- Large open plan lounge area upon entry
- Kitchen/Meals arrangement
- Pergola & entertaining area
- Heating and evaporative cooling
- Floating floorboards



Kirsty Cunningham
0414 344 475