

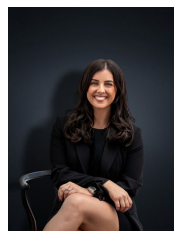


103 Mossfiel Drive HOPPERS CROSSING VIC

4 2 2

Thats right you read it correct! This home has been loved and cherished by only one owner for its entirety. With incredible upkeep, the home has been well maintained both inside and out. Situated smack bang in the centre of the famous Mossfiel estate the home is located close by to any amenity you will ever need. Pacific Werribee is only 2km down the road and Hoppers Crossing train station is 2.4km away. The home is also within walking distance to reputable schools including Mossfiel Primary, Hoppers Crossing Secondary School & St Peters Catholic Primary School, Parklands, Sporting groups & local shops. You can basically throw away the car keys there is no need for them! With no compromise on space & situated on a massive 624 sq m the home provides you:

Building Size : 20 sqm
Land Size : 624 sqm
View : <https://www.ypa.com.au/7360916>



Kirsty Cunningham
0414 344 475

Four spacious bedrooms with built in robes
 Master with ensuite and walk in robe