



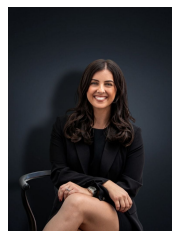
28 Millewa Way WYNDHAM VALE VIC

3 1 2

Inside and out this home has been precisely cared for and designed to please the new owners for a long future. From arriving and viewing the front landscaping to walking into the immaculately presented front entrance the home is sure to suit only the fussiest of buyers. Situated on the cusp of a court location the home is within walking distance to the popular Iramoo Primary School, local shops, parklands and only a seven minute commute to the Wyndham Vale railway station. The home offers:

- Three bedrooms with built in robes
- Central renovated bathroom
- Large formal lounge & dining space
- Kitchen/ Meals area
- Renovated kitchen with quality appliances, upright cooktop
- Ducted heating and evaporative cooling
- Outdoor covered entertaining area overlooking the entire backyard

Building Size : 12 sqm
Land Size : 606 sqm
View : <https://www.ypa.com.au/7360934>



Kirsty Cunningham
0414 344 475