

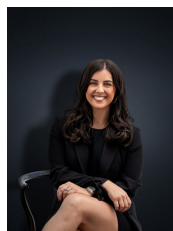


5 Manifera Close WYNDHAM VALE VIC

4 2 3

Situated in a popular pocket and quiet court location within Manor Lakes this beautifully presented family home is sure to set buyers hearts racing from the minute you walk inside! Built for a large family the home is situated privately at the back of a court with plenty of features that will provide a perfect family set up! Located within walking distance to Manor Lakes Train Station (approx. 750 m), Manor Lakes Shopping Centre, Manor Lakes College, Parklands and walking tracks there is no need for cars, you can simply throw away the keys and walk to everything! The home offers:

Building Size : 25 sqm
Land Size : 707 sqm
View : <https://www.ypa.com.au/7360945>



Kirsty Cunningham
 0414 344 475

- Four spacious fitted bedrooms
- Master with en suite and walk in robe
- Separate study
- Formal lounge upon entry
- Large open plan Kitchen/Meals and family living area overlooking a private decked courtyard