



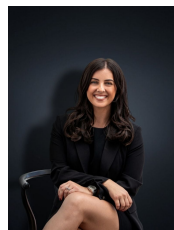
## 5 Fleetwood Court HOPPERS CROSSING VIC

4 🚗 3 🚗 2 🚗

Situated in the exclusive Cambridge estate this grand family home is situated in a quiet court location and offers numerous amounts of living spaces for any growing family. The premiere location sets you within a 6 minute drive to Pacific Werribee shopping center, walking distance to parklands, Cambridge primary school & public transport. The outstanding property with all its features includes:

**Land Size** : 531 sqm  
**View** : <https://www.ypa.com.au/7360952>

- Four spacious bedrooms with built in robes
- Separate study (or potential fifth bedroom)
- Large master bedroom with walk in robe and ensuite with double vanity
- Formal lounge and formal dining room
- Renovated kitchen with loads of cupboard space and walk in pantry, stone benchtops, stainless steel appliances, built in microwave and dishwasher
- Family and meals area adjacent to the kitchen



**Kirsty Cunningham**  
0414 344 475