



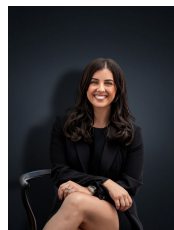
## 130 Morris Road HOPPERS CROSSING VIC

4 2

The possibilities here are simply endless, the home offers dual living possibilities, main road exposure, impeccable presentation and a massive 555 sq m allotment in a supreme Hoppers Crossing location! With location being nothing but the best you are set within walking distance to Hoppers Crossing train station, local shops, restaurants and a bus stop directly across the road! Also close by to freeway access, primary & secondary schools and Pacific Werribee (3.0km). We challenge you to find a better located property. The home offers:

**Building Size** : 16 sqm  
**Land Size** : 555 sqm  
**View** : <https://www.ypa.com.au/7360961>

- Three fitted bedrooms
- Central updated bathroom and separate toilet
- Massive open living space upon entry
- Kitchen/ meals area with gas cooking appliances and plenty of cupboard space
- Ducted heating, ceiling fan, outdoor awnings
- Timber floorboards and tiles throughout



**Kirsty Cunningham**  
0414 344 475