



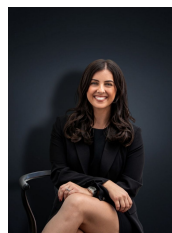
35 Canberra Avenue HOPPERS CROSSING VIC

4 2 2

3 + 5 = LUCKY NUMBER 8!!! Located in one of Hoppers Crossings most dynamic estates Woodville Park this unrivalled home is sure to attract all buyers for different purposes. Situated on a corner allotment of over 600 sq m (approx.) this opportunity is waiting to be your best Christmas present! Setting you amongst all of Hoppers Crossings dominant attractions you are within walking distance (approx. 900m) to Pacific Werribee, Hoppers Crossing railway station (approx. 1.5km), reputable schools, parklands and only a short distance to freeway access. Not only does the position offer great benefits but so does the home itself, offering:

Building Size : 18 sqm
Land Size : 603 sqm
View : <https://www.ypa.com.au/7360965>

- Four fitted bedrooms
- Master bedroom with ensuite
- Large family living space upon entry
- Formal dining room/ optional separate study
- Large hostess kitchen with meals adjacent



Kirsty Cunningham
0414 344 475