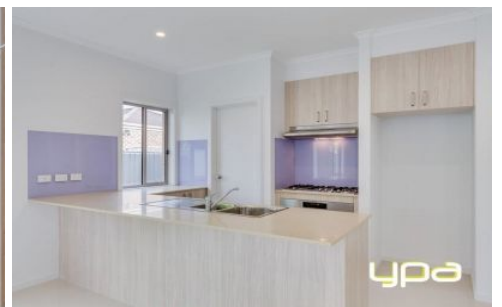
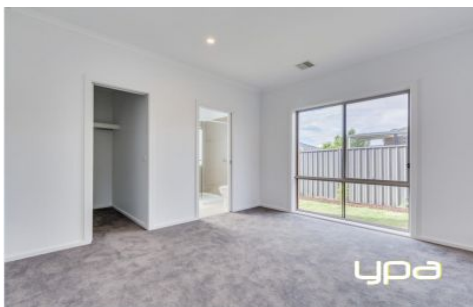


ypa



12 Toolibin Street WYNDHAM VALE VIC

4  2  2 

Dont stress for building as you can buy this almost brand new family home with all quality features and fittings throughout positioned perfectly in the sought after location of Manor Lakes.

This four bedroom home is within close proximity to schools, child care, Manor lakes shopping centres, the Wyndham Vale train station the location certainly ticks all of the boxes.

A long list of appointments include:

Master bedroom with big walk in robes and full en-suite with double stone vanities and stone benchtop with oversize shower.

Three other good size bedrooms with built in robes.

Approx.9 feet ceiling height.

Big formal lounge area at the front can be used as fifth

Land Size : 512 sqm

View : <https://www.ypa.com.au/7360980>