



1/7 Walwa Place WERRIBEE VIC

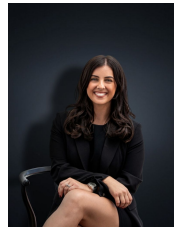
3  3  1 

Located undoubtedly in one of Werribees most popular positions this fantastic home is within walking distance to Werribee CBD, train station, shops, walking tracks, Mackillop College, Werribee Secondary College & both Werribee and Corpus Christi Primary Schools and only a minutes drive to get onto the freeway and reach Melbourne in under 35 minutes! Although the location is enough to want to buy the property the home itself does offer:

- Three fitted bedrooms, two with walk in robes
- Master with en suite (and walk in robe)
- Spacious living space upon entry
- Adjacent to the living space, the kitchen is open plan and overlooks the dining area
- Stainless steel appliances with dishwasher and loads of cupboard space
- Central bathroom upstairs
- Powder room downstairs

Land Size : 355 sqm

View : <https://www.ypa.com.au/7361008>



Kirsty Cunningham
0414 344 475