

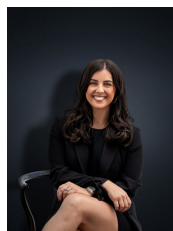


3 Vista Way WYNDHAM VALE VIC

3 2 2

Located on a massive 623 sq m allotment this home has endless possibilities at an affordable price, with potential to renovate and make it your own or subdivide for future developments. The home is situated within close distance to reputable schools, kindergartens, parklands, local shops and only 6 minutes to Wyndham Vale Train Station. Within walking distance is also the new Harpley Estate with proposed town centre, schools and another Train station! The time to buy here is NOW and the home offers:

Building Size : 16 sqm
Land Size : 623 sqm
View : <https://www.ypa.com.au/7361014>



Kirsty Cunningham
 0414 344 475

- Three bedrooms with built in robes
- Two bathrooms
- Step down lounge
- Kitchen/meals area with gas cooking appliances
- Fireplace
- Timber floorboards
- Double garage with rear access

(PHOTO ID REQUIRED AT OPEN FOR INSPECTION)