



22 Botanic Way WYNDHAM VALE VIC

5 3 2

With brand new everything, this is one that you are going to fall in love with. A unique opportunity is presented to the buying market with no expenses spared throughout. Updated to perfection the home is located overlooking the creek & walking tracks, providing a peaceful outlook from your master balcony.

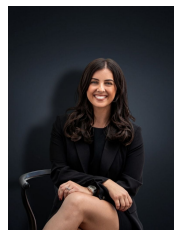
Nearby landmarks include reputable schools, kindergartens, local shops and a short drive away is Wyndham Vale Train Station! With all the hard work being already completed the home offers its next proud owner:

- Five spacious bedrooms with built in robes
- Master with private balcony, walk in robe and ensuite
- Central bathrooms (both upstairs and downstairs)

Chefs standard kitchen with stainless steel appliances including double ovens, double gas stove tops and double rangehood, dishwasher, loads of cupboard space and modern stone benchtops

Land Size : 588 sqm

View : <https://www.ypa.com.au/7361017>



Kirsty Cunningham
0414 344 475