



## 5 Talina Close HOPPERS CROSSING VIC

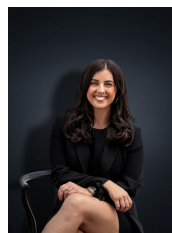
3 1 2

Nestled quietly at the end of a court, is this tastefully decorated low maintenance home. The position being so close to the Pacific Werribee Plaza, public transport, children's play ground and easy access to freeway, makes this an ideal place to invest. The home offers ducted heating, split-system air-conditioning, large kitchen with ample cupboards and a double remote garage with rear access. The astute purchaser will appreciate the secure back yard with mature trees, all weather pergola and lush gardens that makes entertaining a breeze. Currently leased until the January, 2019 at \$310.00 per week. An affordable opportunity awaits.

(PHOTO ID REQUIRED AT OPEN FOR INSPECTION)

At YPA Estate Agents 'our service will move you'

**Building Size** : 18 sqm  
**Land Size** : 450 sqm  
**View** : <https://www.ypa.com.au/7361029>



**Kirsty Cunningham**  
0414 344 475