



## 44 Riversdale Drive WERRIBEE VIC

4 2 2

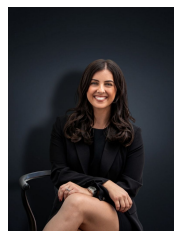
With panoramic views of the Werribee River from your front door, there isn't a much better outlook than this. Not only are you situated on your large private block of land with a spacious backyard (approx. 760 sq m) but you are directly across the road from peaceful tracks and parklands. The home is positioned in a fantastic pocket within walking distance to Bethany Catholic Primary School, Westgrove Primary, child care centres and bus stops and is also only a short distance away to Tarneit West Shopping Centre and Pacific Werribee Shopping Centre. This grand family home offers its next lucky family:

**Building Size** : 37 sqm  
**Land Size** : 759 sqm  
**View** : <https://www.ypa.com.au/7361036>

Four bedrooms

Massive master bedroom with parents retreat, walk in robe and luxury spa ensuite with double shower and double vanities

Remaining bedrooms provide either a walk in robe or built in robe



**Kirsty Cunningham**  
**0414 344 475**