

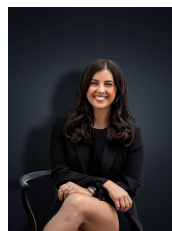
5 Kinglake Drive WYNDHAM VALE VIC

4 2 2

You read it right, this one is only 4 minutes to the Wyndham Vale Train Station! You couldn't be in any better position. If a convenient lifestyle appears to you then this low maintenance home in a great location should end your search for a dream home! Situated on approximately 513 sq m and built to suit a growing family, the 7 year old home provides:

- Four spacious fitted bedrooms
- Master bedroom with ensuite and walk in robe
- Two separate living areas
- Open plan kitchen/meals and family living arrangement
- Kitchen boasts large bench space and stainless steel 900mm upright cooker
- Ducted heating
- Evaporative cooling
- Double garage
- Large alfresco area overlooking the well maintained and

Building Size : 2 sqm
Land Size : 513 sqm
View : <https://www.ypa.com.au/7361040>



Kirsty Cunningham
0414 344 475

5 Kinglake Drive, Wyndham Vale

