

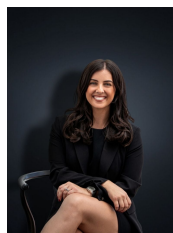


### 3 Cassia Court HOPPERS CROSSING VIC

3 2 2

Located in a peaceful court location, this spacious family home sets you on a large 646 sq m (approx.) block of land. This alone is a standout feature, but the home provides numerous living zones for the growing family. Located only 600m away from Hogans Corner Shops, convenience is certainly at the top of the list! Also, nearby are both Primary and Secondary Schools, Parks, Bus Stops and Pacific Werribee (approx 2.9km)., Hoppers Crossing Train Station (approx. 4.7km). & Tarneit Station (approx. 3.9km). Whether you are an investor or owner occupier this versatile home is sure to suit many. The property offers:

**Building Size** : 15 sqm  
**Land Size** : 649 sqm  
**View** : <https://www.ypa.com.au/7361056>



**Kirsty Cunningham**  
0414 344 475

- Three fitted bedrooms
- Master with en suite and built in robe
- Large living space upon entry
- Second living/rumpus room/ home office
- Spacious kitchen adjacent to a second meals/third living