



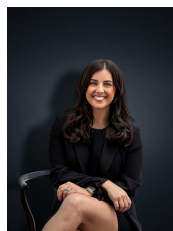
**27 Medina Drive HOPPERS CROSSING VIC**

4 2 2

This beautifully designed family home offers spacious living zones and is in a premium location overlooking parklands in the ever so popular Cambridge estate. The home sets you only 5 minutes to Pacific Werribee (approx. 3.2km), 3 minutes to Hogans Corner Shopping centre (approx. 1.9km), walking distance to Parks, Reputable Schools (including Cambridge Primary School) and child care centres. If you are seeking a home in a friendly and well-established area for your family, then this is the one for you! The home provides:

- Four large bedrooms
- Master bedroom with walk in robe and spacious ensuite
- Central spa bathroom
- Formal lounge and formal dining (or study space)
- Large open plan kitchen/meals and family living arrangement
- Kitchen with gas cooking appliances, dishwasher and an

**Building Size** : 26 sqm  
**Land Size** : 562 sqm  
**View** : <https://www.ypa.com.au/7361057>



**Kirsty Cunningham**  
**0414 344 475**

27 Medina Drive, Hoppers Crossing

