



## 188 McGrath Road WYNDHAM VALE VIC

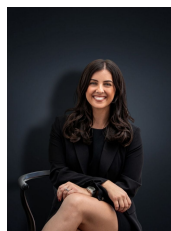
3 1 1

Located in a booming suburb this perfect home would make a first home owner very happy or an investor extremely comfortable with their low maintenance, easy to lease home.

Well located minutes from the brand new Harley estate (with proposed Train Station and Town Centre), reputable schools including Iramoo Primary School & Thomas Chirnside Primary School, Bus Stops and Parklands this home is well positioned in a family-friendly pocket.

Positioned on a spacious allotment approximately 542 sq m the home offers:

**Building Size** : 12 sqm  
**Land Size** : 542 sqm  
**View** : <https://www.ypa.com.au/7361059>



**Kirsty Cunningham**  
**0414 344 475**

- Three bedrooms (two with built in robes)
- Central bathroom
- Kitchen/Meals area adjacent to the family living space