



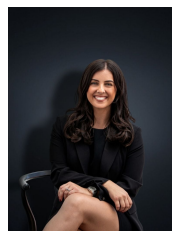
20 Advent Road WERRIBEE VIC

4  3  2 

Certainly a rare find is this beautifully presented near new home, situated on a massive 529 sq m allotment providing the most spacious of backyards with plenty of space for the kids to run around. With an open plan design the home is situated in the new and very popular Riverwalk estate which has future for two schools, community center, town center and sporting reserves. Additionally, the estate offers its very own Water Park and playgrounds, you are just minutes from the freeway and only a short drive to Werribee CBD Precinct with Restaurants, Cafes, Werribee Train Station and Shops galore. The property offers:

- Four bedrooms plus a separate study/ formal lounge area upon entry
- Master bedroom with ensuite
- Kitchen/Meals and family living area
- Kitchen with stainless steel 900mm appliances including

Building Size : 22 sqm
Land Size : 529 sqm
View : <https://www.ypa.com.au/7361060>



Kirsty Cunningham
0414 344 475

20 Advent Road, Werribee

