



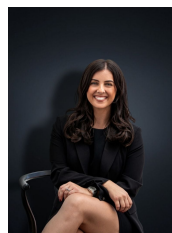
## 4 Wiltonvale Avenue HOPPERS CROSSING VIC

4 🏠 2 🚿 1 🚗

Located in one of Hoppers Crossings most dynamic estates Woodville Park this unrivalled home is sure to attract many astute buyers for different purposes. Situated on a spacious allotment of 559 sq m (approx.) this opportunity is unrivalled! Setting you amongst all of Hoppers Crossings dominant attractions you are within walking distance (approx. 1.8km) to Pacific Werribee, Hoppers Crossing railway station (approx. 1.6km), reputable schools, parklands and only a short distance to freeway access. Not only does the position offer great benefits but the home also has a separate self-contained granny flat to the rear with its own private access for dual residents. Offering you:

**Building Size** : 16 sqm  
**Land Size** : 559 sqm  
**View** : <https://www.ypa.com.au/7361077>

- Three large bedrooms (to the original residence)
- Large family living space upon entry with separate study area/dining room
- Update kitchen and meals area



**Kirsty Cunningham**  
**0414 344 475**