

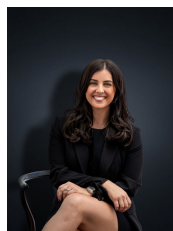


## 186 Thames Boulevard TARNEIT VIC

3 2 2

This spectacular family home is one that will surely suit many purchasers; whether you are a first home buyer, growing family or looking at downsizing this stunning home in a pocket within walking distance to beautiful Werribee River walking tracks is sure to suit you. Located in a prime pocket of Tarneit you are also within walking distance to public transport, both Westgrove Primary & Bethany Primary schools, Tarneit West shopping centre, Sprinkles Ice-Creamery, Parklands and only approximately 3km to Pacific Werribee. The freshly updated home offers the new owner:

**Building Size** : 22 sqm  
**Land Size** : 449 sqm  
**View** : <https://www.ypa.com.au/7361094>



**Kirsty Cunningham**  
**0414 344 475**

- Three spacious bedrooms (two with built in robes)
- Master bedroom with en suite and walk in robe
- Formal lounge upon entry
- Open plan Kitchen/ Meals & family living arrangement
- Stainless steel appliances & dishwasher
- Ducted heating