



1B Billabong Crescent TARNEIT VIC

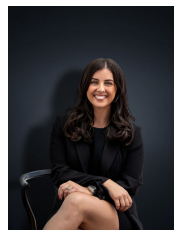
3 2 2

Brilliantly positioned within walking distance to the tranquil Werribee River is this custom designed and quality filled family home awaiting its next owner.

Built for a growing family the location is second to none. Within walking distance to numerous schools including Bethany Primary School (1.7km), Good News Lutheran college (1.6km) and the Islamic school of Melbourne (1.1km). Also nearby you have Pacific Werribee (approx. 4.7km), Parklands, Child care centres & Public transport. Built by Urban Edge homes with a long list of features, the home includes:

- Three spacious bedrooms (two with built in robes)
- Master bedroom with walk in robe and ensuite with double vanities
- Large formal lounge and formal dining room

Land Size : 401 sqm
View : <https://www.ypa.com.au/7361121>



Kirsty Cunningham
0414 344 475