



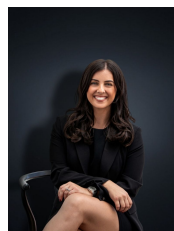
15 Waterloo Court HOPPERS CROSSING VIC

5 3 2

Ideally located in the popular estate of Derrimut Heath this wonderfully refurbished home offers nothing but the best in high end quality, finishings and family living throughout the entire home. Situated in the bowl of a court, leaving plenty of parking space for additional visitors the home is sitting on a large allotment of approximately 1156 sq m with a massive backyard and numerous entertaining zones.

Located within close proximity to schools, parklands, walking tracks and only 8 minutes (approx.) to both Pacific Werribee & Hoppers Crossing train station. If this idyllic location isn't enough to excite you, it does not stop there! With all the hard work already done, there is not a thing out of place in this perfectly presented property. The features throughout are nothing but the best and offer:

Building Size : 30 sqm
Land Size : 1156 sqm
View : <https://www.ypa.com.au/7361140>



Kirsty Cunningham
0414 344 475

Five spacious bedrooms with built in robes