



4 Barrow Court HOPPERS CROSSING VIC

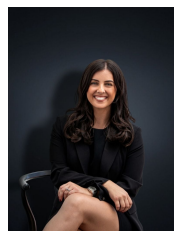
3 2 1

In a convenient court position with so many amenities close by, this home offers both comfortable and convenient living. Located within the Cambridge school zone and only a short 5-minute drive to Pacific Werribee Shopping Centre this home is ideal for any young family, first home buyers or investors alike. Within walking distance, you also have Parklands, local shops & bus stops making life that little bit easier!

This fabulous home offers its next proud owner the following:

- Three bedrooms with built in wardrobes
- Master bedroom with en suite and walk in robe
- Central bathroom with spa bath
- Large formal lounge upon entry with wood fire heater
- Open plan kitchen/meals area
- Ducted heating

Building Size : 16 sqm
Land Size : 461 sqm
View : <https://www.ypa.com.au/7361150>



Kirsty Cunningham
0414 344 475