



73 Westleigh Drive WERRIBEE VIC

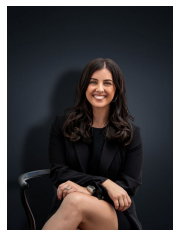
5 2 3

Words don't describe the potential that is on offer here! Situated in the popular Westleigh Gardens Estate this home set on approximately 1089 sq m with plenty of backyard space for the kids to run around! With all amenities in easy reach the location ticks all the boxes. Within close distance you have, Public Transport, Parklands, Freeway access and you are only a short drive to Werribee CBD & Railway Station.

With all the bells & whistles included this is sure to suit the fussiest of buyers and any growing family. The home comprises:

Land Size : 1089 sqm

View : <https://www.ypa.com.au/7361161>



Kirsty Cunningham
0414 344 475

- Five large bedrooms with built in robes
- Master bedroom with walk in robe and en suite
- Large formal living room upon entry
- Kitchen overlooking a large meals/family area