

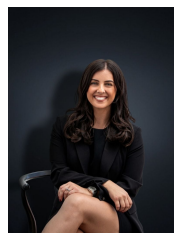


10 Smeaton Avenue HOPPERS CROSSING VIC

4 2 2

This neat, tidy and absolutely private home is ready to find its next proud owners! Situated on a sizeable and spacious allotment of approximately 632 sq m there is so much potential for your future. Located in one of Hoppers Crossings most renowned estates Mossfiel this home offers nothing but the best in positioning. Only 1.9km to Pacific Werribee, 2km to Hoppers Crossing Train station, walking distance to parks, local shops & reputable schools including Hoppers Crossing Secondary school, St Peters Primary School & Mossfiel Primary School, medical centers, kindergartens & sporting clubs the home is central to all amenities. With family in mind the design of the home will suit many families, investors and first home buyers alike, and includes:

Building Size : 18 sqm
Land Size : 632 sqm
View : <https://www.ypa.com.au/7361164>



Kirsty Cunningham
 0414 344 475

Four bedrooms
 Master bedroom with ensuite and walk in robe