



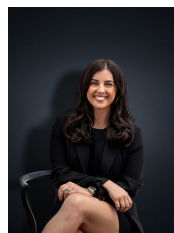
7/10-16 Nepean Court WYNDHAM VALE VIC

2  1  1 

Located in a quiet court location this wonderful unit is perfect for an investment opportunity in a dynamite location within walking distance to local shops, bus stops and positioned central to both Wyndham Vale & Werribee Train Stations. With immaculate presentation throughout, the home offers:

- Two spacious bedrooms
- Central bathroom
- Lounge room upon entry
- Kitchen and dining space
- Gas cooktop, electric oven, dishwasher & plenty of cupboard space throughout the kitchen
- Tiles throughout
- Brand new carpet in the bedrooms
- Separate laundry
- Courtyard area
- Single lock up garage

Building Size : 10 sqm
Land Size : 151 sqm
View : <https://www.ypa.com.au/7361171>



Kirsty Cunningham
0414 344 475