



27 Wentworth Avenue WYNDHAM VALE VIC

3 2 2

Wonderfully meeting the functional demands of a modern family, first home buyer or investor this spacious property showcases multiple living zones and an open floor plan. This single level home displays a well-designed three-bedroom property with a great dining space that flows into the established and low maintenance garden.

The kitchen offers an abundance of cupboard space and storage. This well cared for and cosy home is sure to impress home buyers and investors alike!

Situated close to local schools and on the edge Presidents Park this home is also situated only a short drive from the Wyndham Vale V-line Train Station and Manor Lakes shopping centre.

The property includes:

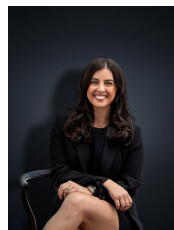
Master bedroom with ensuite and walk in robe

Additional two bedrooms fitted with BIRs

Central bathroom with open natural lighting

Land Size : 413 sqm

View : <https://www.ypa.com.au/7361194>



Kirsty Cunningham
0414 344 475