



## 33 Morgan Crescent WERRIBEE VIC

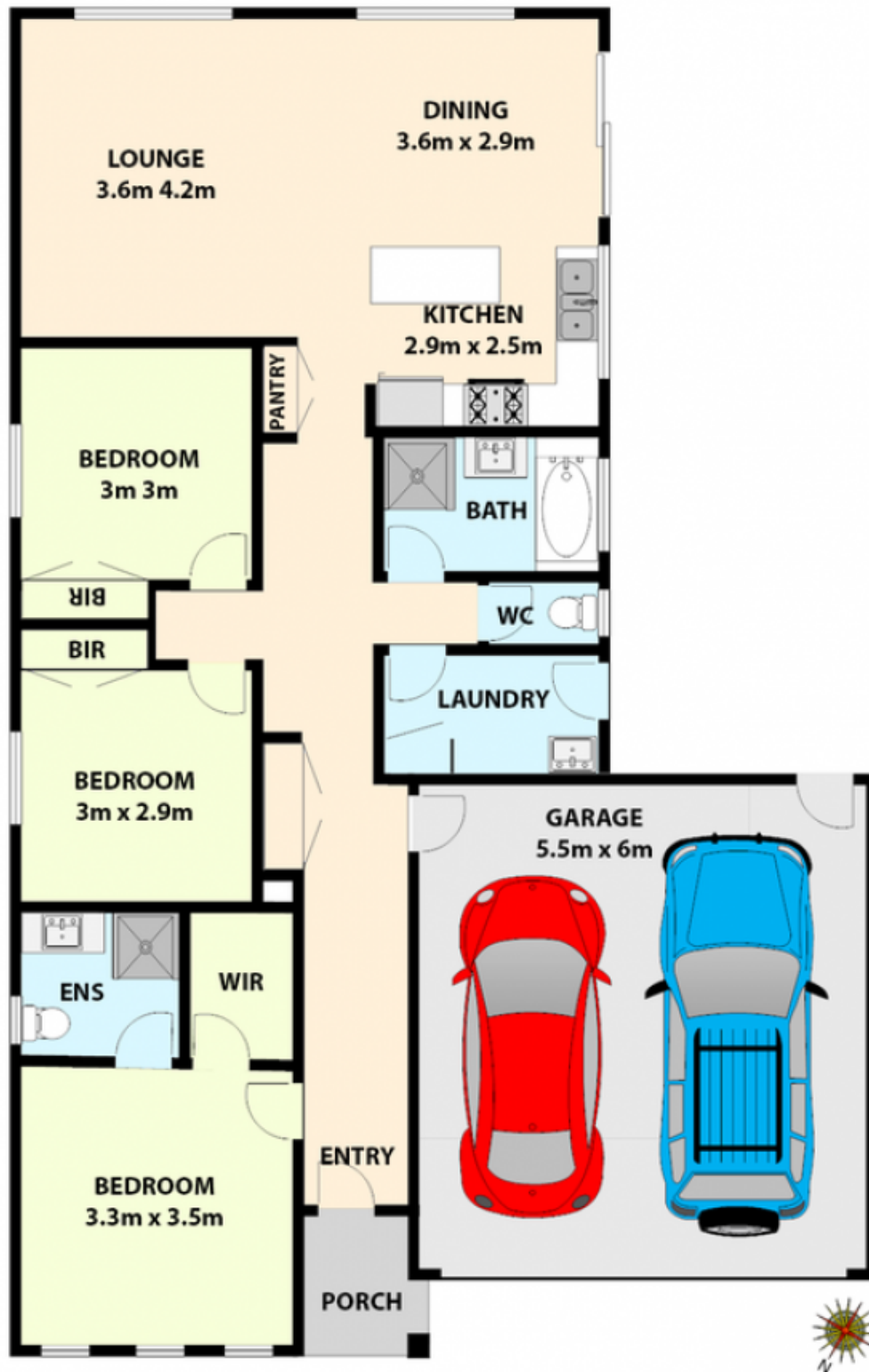
3 2 2

1st home buyers, astute investors or an elderly couple looking for a super low maintenance property with all amenities within minutes look no further than 33 Morgan Crescent.

Walk to Werribee CBD, cafes, restaurants, shops, Werribee Secondary, Mackillop Catholic College, Corpus Christi primary and Werribee Primary school. Only 2 minutes drive onto the M1 to Melbourne CBD within 30 minutes, a short 3-5 minute drive to Werribee Open Range Zoo, Werribee Park mansion, Shadow fax winery and a 10 minute drive to Wyndham Harbor-Werribee south beach.

Presenting three fitted bedrooms, master with en suite and walk in robe, central bathroom and an open plan tiled family/meals arrangement overlooking the modern hostess kitchen. Appointments include stainless steel appliances,

**Building Size** : 16 sqm  
**Land Size** : 300 sqm  
**View** : <https://www.ypa.com.au/7361212>



**33 MORGAN CRESCENT, WERRIBEE**

*All data and dimensions in this sketch are approximate*