



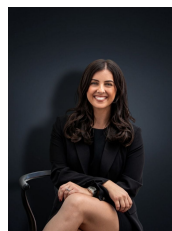
## 1 Westbourne Drive WYNDHAM VALE VIC

3  2  2 

Situated in a family friendly neighbourhood this perfectly maintained residence is sure to suit many first home buyers & investors alike. Within close proximity to many attractions including Iramoo Primary School (Approx. 350m), Local Shops (650m), Public Transport (150m) & Manor Lakes Train Station (3.5km) this home provides a super convenient lifestyle opportunity for any young family to enjoy. With immaculate presentation the home is situated on 533 sq m and offers:

**Building Size** : 16 sqm  
**Land Size** : 533 sqm  
**View** : <https://www.ypa.com.au/7361216>

- Three bedrooms with built in robes
- Master bedroom with ensuite and walk in robe
- Open plan kitchen/meals area
- Formal lounge with adjacent dining room
- Ducted heating
- Outdoor pergola/entertaining area
- Double garage with built in office/sitting area
- Unrestricted side access and parking for multiple cars



**Kirsty Cunningham**  
0414 344 475



1 Westbourne Drive, Wyndhroon Veter