



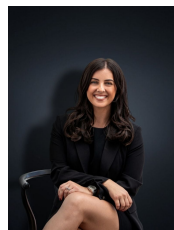
4 Bellbird Court WERRIBEE VIC

4 🏠 2 🚗 2 🚗

You cant get any better than this! Situated on a massive allotment of approximately 815 sq m this impressive opportunity ticks all the boxes that any family could dream of. With a fresh modern look, the home is located within walking distance to Pacific Werribee, reputable schools, parklands, AquaPulse and public transport, this home easily sets you right in the centre of Werribee. Peacefully positioned in a quiet court location this quality-built home has been recently renovated throughout and offers;

- Four spacious bedrooms with built in robes
- Large master suite with ensuite and walk in robe
- Kitchen/Meals and family living area with fireplace
- Separate rumpus room
- Kitchen with stainless steel appliances, 900mm upright cooktop, dishwasher & plenty of cupboard space
- Ducted heating
- Split system air conditioning

Land Size : 815 sqm
View : <https://www.ypa.com.au/7361230>



Kirsty Cunningham
 0414 344 475



4 Bellbird Court, Werribee



While every attempt is made to ensure the accuracy of this floor plan, the dimensions and measurements are approximate and should not be used as a basis for any construction or other work. The actual layout and dimensions of the property may vary from those shown on this floor plan. The actual layout and dimensions of the property may vary from those shown on this floor plan. The actual layout and dimensions of the property may vary from those shown on this floor plan.

