



## 20 Salisbury Street WERRIBEE VIC

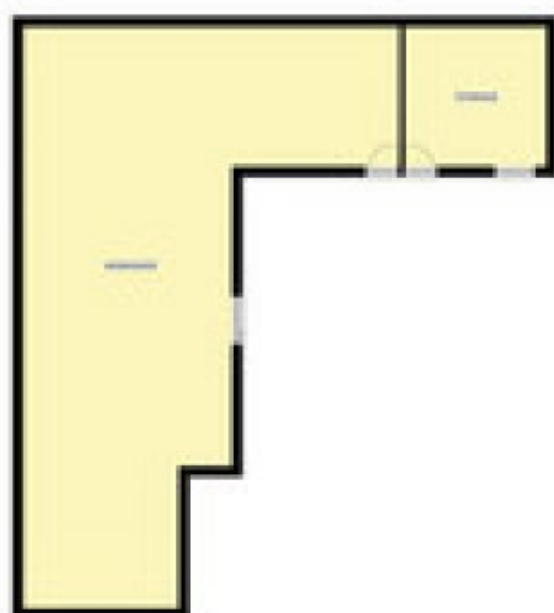
2 1 4

An opportunity of a lifetime at the forefront of Wyndhams Planning Scheme is this amazing opportunity. This large allotment of approx. 613m2 is located in the ACTIVITY CENTRE Schedule 1 and is zoned to build between 2-5 storeys (multi-purpose commercial and residential STCA) and also features rear laneway access.

Positioned one street back from Synnot Street and Within a few hundred meters to Werribee Station and is in the very heart of growing Werribee and showcases its position with premium street exposure. The home has been well maintained and offers 2 great sized bedrooms, updated kitchen and bathroom, heating and cooling, multiple car storage with a garage at the front and huge workshop accessible from the rear laneway

This property is perfect for a savvy investor or developer looking to capitalize on Werribee's future growth. Call

**Building Size** : 14 sqm  
**Land Size** : 613 sqm  
**View** : <https://www.ypa.com.au/7361258>



20 Salisbury Street, Werribee

ypa

While every attempt has been made to ensure the accuracy of this floor plan, some discrepancies may arise between the floor plan and the actual property. The floor plan is provided as a guide only and should not be used as a basis for any legal or financial transaction. The floor plan is provided as a guide only and should not be used as a basis for any legal or financial transaction.





20 Salisbury Street, Warrimoo