



15 Tarwin Place WYNDHAM VALE VIC

4  2  2 

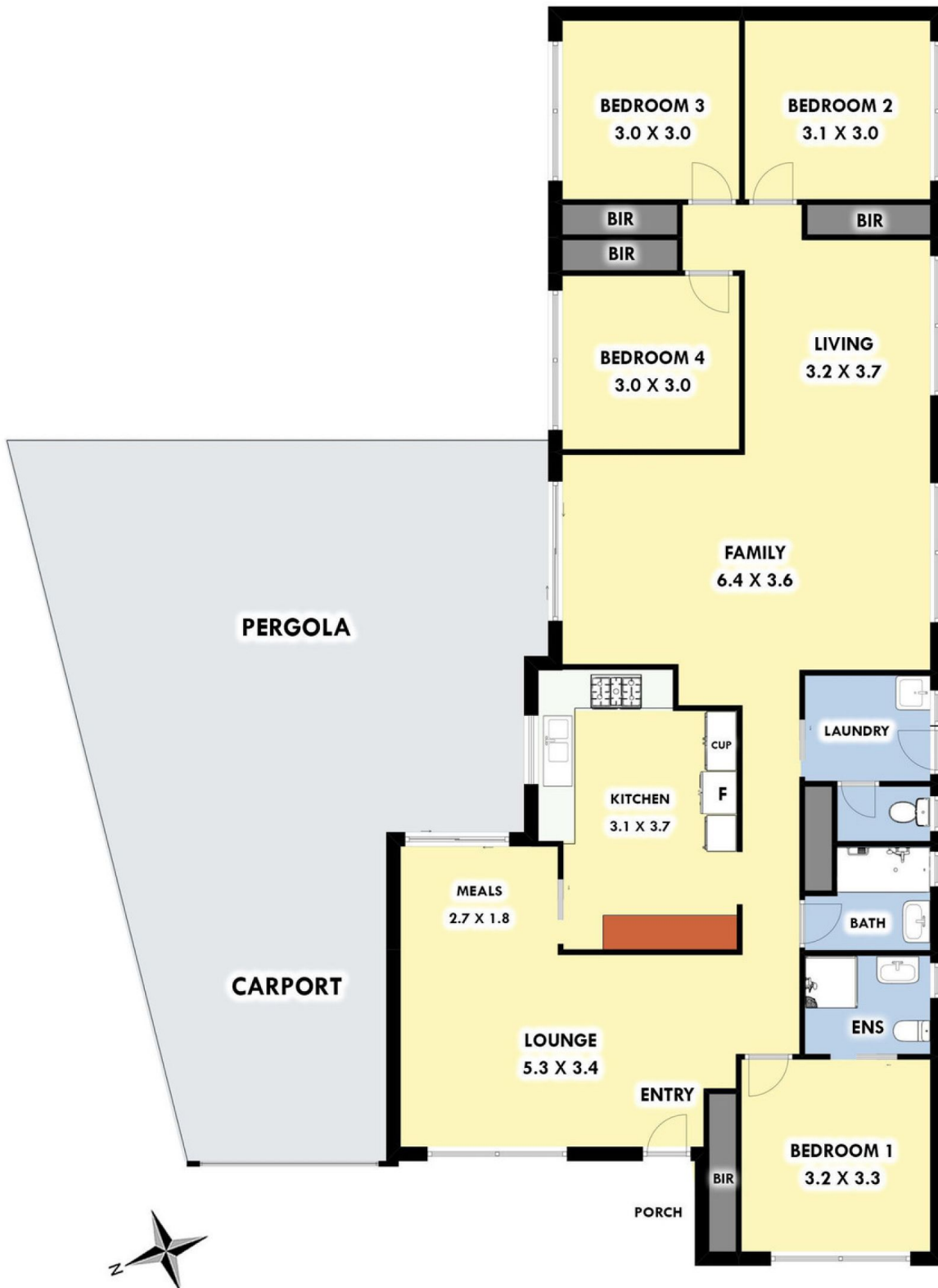
This recently renovated 4 Bedroom home is situated in a very central and convenient location. Sitting on Approximately 525sqm, you are within close proximity to Local Shops, Presidents Park, Eagle Stadium, Iramoo Primary School, Bus Stops and only approximately 4km to Werribee CBD & Train Station.

Building Size : 16 sqm
Land Size : 525 sqm
View : <https://www.ypa.com.au/7361287>

With a modern floorplan, this home is sure to appeal to all astute buyers and is sure to impress with its long list of features:

- Master Bedroom with updated ensuite and built in robes
- Remaining 3 Bedrooms all fitted with built in robes
- Multiple living areas including open plan study, dining and lounge areas
- Updated Central Bathroom
- Spacious kitchen with ample cupboard spaces and quality appliances including 5 burner gas cooktop, dishwasher and

15 Tarwin Place, Wyndham Vale



Whilst every attempt has been made to ensure the accuracy of the floor plan contained here, measurements of doors, windows, rooms and any other items are approximate and no responsibility is taken for any error, omission, or mis-statement. This plan is for illustrative purposes only and should be used as such by any prospective purchaser. The services, systems and appliances shown have not been tested and no guarantee as to their operability or efficiency can be given.