



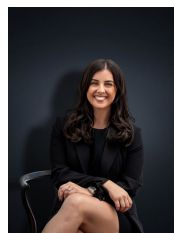
5 Amazon Place WERRIBEE VIC

3 1 1

What an amazing opportunity this home presents with a modern open plan design and a spectacular position in the midst of everything that Werribee has to offer. Neighbouring Parklands, Pacific Werribee (approximately 4 minutes), Werribee CBD & Train station (approximately 6 minutes), Bus Stops, Reputable schools including Bethany Primary & West grove Primary, this truly is one of Werribees finest locations! The home is situated on approximately 520 sq m and offers;

Building Size : 14 sqm
Land Size : 520 sqm
View : <https://www.ypa.com.au/7361295>

- Three spacious bedrooms with built in robes
- Stunning renovated central bathroom
- Kitchen/Meals & Family living arrangement
- Kitchen boasts stainless steel appliances and dishwasher
- Ducted Heating & Evaporative cooling
- Alarm system
- Oversized single garage with remote



Kirsty Cunningham
0414 344 475

5 Amazon Place, Werribee



Whilst every attempt has been made to ensure the accuracy of the floor plan contained here, measurements of doors, windows, rooms and any other items are approximate and no responsibility is taken for any error, omission, or mis-statement. This plan is for illustrative purposes only and should be used as such by any prospective purchaser. The services, systems and appliances shown have not been tested and no guarantee as to their operability or efficiency can be given.