



## 6/3 Doolan Street WERRIBEE VIC

2  1  1 

Situated on the ever so popular South Side of Werribee within walking distance to Werribee CBD & Train Station, reputable schools, cafe's & local shopping amenities is this perfect low maintenance home. For those looking for an easy & secure investment opportunity or first home buyers & downsizers alike this is certainly one to add to your inspection list TODAY!

**Land Size** : 91 sqm

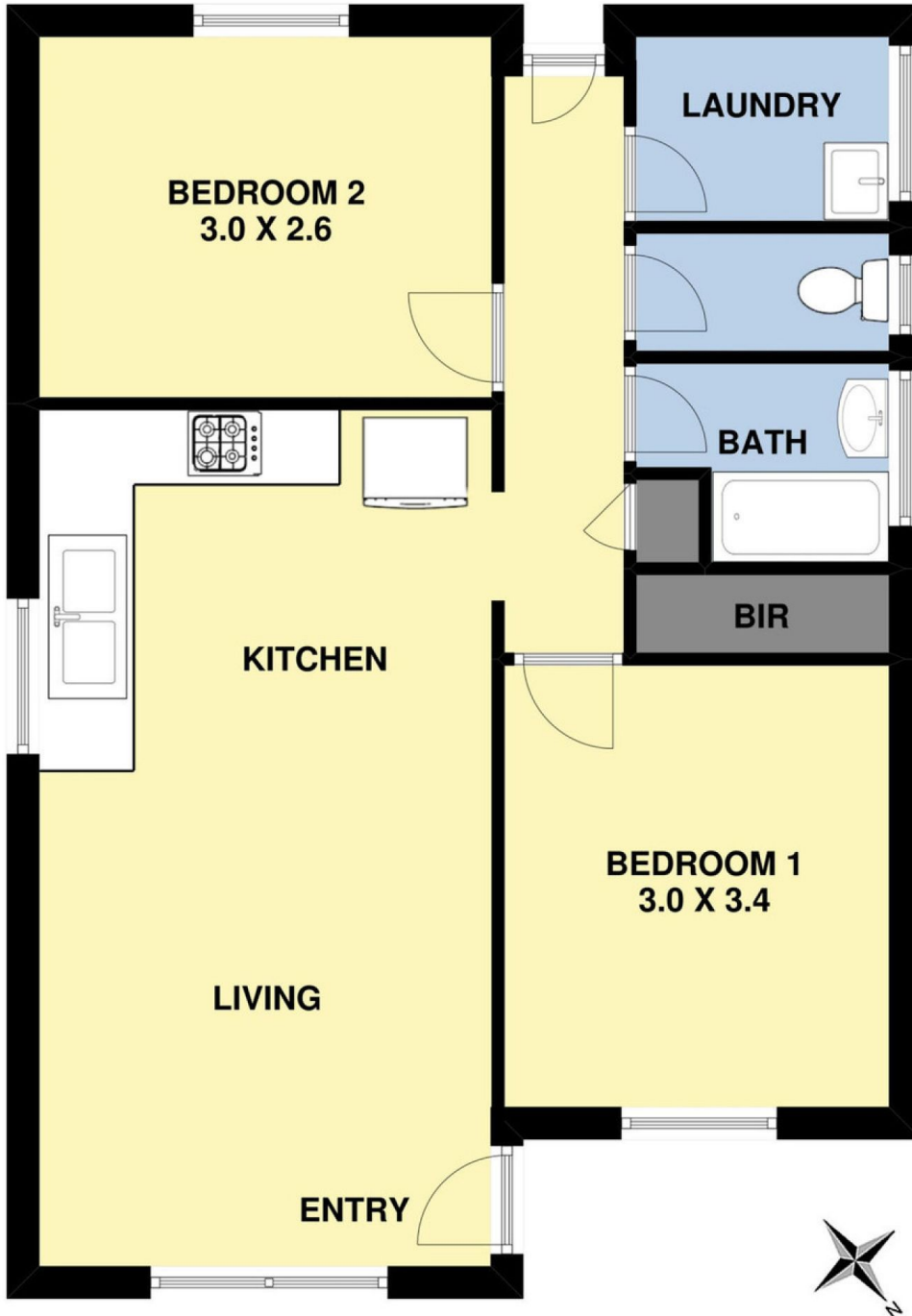
**View** : <https://www.ypa.com.au/7361303>

This bright & updated unit offers two generous sized bedrooms, spacious bathroom, updated kitchen with laminate flooring, split system heating and cooling and stainless-steel cooking appliances. Outside offers a single carport and a private and enclosed courtyard.

(PHOTO ID REQUIRED AT OPEN FOR INSPECTION)

'At YPA Estate Agents, our service will move you'

# Unit 6/3 Doolan Street, Werribee



Whilst every attempt has been made to ensure the accuracy of the floor plan contained here, measurements of doors, windows, rooms and any other items are approximate and no responsibility is taken for any error, omission, or mis-statement. This plan is for illustrative purposes only and should be used as such by any prospective purchaser. The services, systems and appliances shown have not been tested and no guarantee as to their operability or efficiency can be given.