



## 21 Bertie Street MANOR LAKES VIC

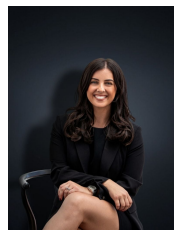
4 2 2

This wonderfully refreshing single storey home combines spacious proportions and a flexible easy to maintain floor plan. Situated in a quiet pocket of Manor Lakes the property sits on approximately 510 sq m. Located close by to Wyndham Vale Train Station (2.1km), Manor Lakes Shopping Centre, parklands, Lollipop Hill playground, reputable schools and bus stops this home is perfect for those whom are looking for a convenient location close by to everything!

Comprising generous living/dining area opening to a stylish kitchen this home offers an abundance of storage and space needed for a growing family. The 2-year-old property encompasses the following with impeccable upgrades throughout;

**Land Size** : 510 sqm

**View** : <https://www.ypa.com.au/7361327>



**Kirsty Cunningham**  
0414 344 475

Four spacious bedrooms

Master bedroom with a walk-in robe and double en-suite