



22 Yarra Street WERRIBEE VIC

3 1 1

This wonderfully refined and well loved home combines spacious proportions and a flexible easy to maintain floor plan. Situated in the popular Riverdene estate, the property is located close by to Pacific Werribee, Wyndham Central school, Werribee river, parklands & trails and bus stops this home is perfect for those whom are looking for a convenient location close by to everything!

The home features a covered outdoor entertaining area and an easily maintained garden perfect for those looking for their first home or an investment opportunity (currently leased until November 2019).

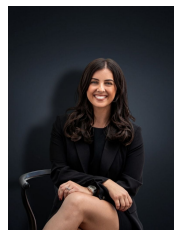
The home features:

Master bedroom with walk in robe

Two spacious bedrooms remaining (one with a walk in robe and other with a built in robe)

Land Size : 336 sqm

View : <https://www.ypa.com.au/7361330>



Kirsty Cunningham
0414 344 475

22 Yarra Street, Werribee



Whilst every attempt has been made to ensure the accuracy of the floor plan contained here, measurements of doors, windows, rooms and any other items are approximate and no responsibility is taken for any error, omission, or mis-statement. This plan is for illustrative purposes only and should be used as such by any prospective purchaser. The services, systems and appliances shown have not been tested and no guarantee as to their operability or efficiency can be given.