



4 Breton Drive HOPPERS CROSSING VIC

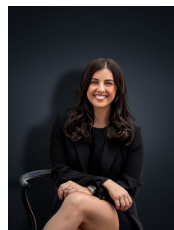
4 2 2

This neat and tidy, well established family home is situated in a central pocket of the popular Grange Estate within walking distance to The Grange P-12 and community centre (1.2km), Good News Lutheran P-12 College (0.4km) and Tarneit West Shopping centre (0.8km).

The home sits on approximately 559sq m making it perfect for a first home buyer or an investor. Within only short distance to Pacific Werribee this home is situated in such a central pocket making the lifestyle ever so convenient. The home features:

- Three bedrooms with an optional study/fourth bedroom
- Master with en-suite and walk in robe
- Kitchen/Meals and family living arrangement
- Formal lounge
- Central bathroom
- Brand new carpets

Land Size : 559 sqm
View : <https://www.ypa.com.au/7361331>



Kirsty Cunningham
 0414 344 475

4 Breton Drive, Hoppers Crossing

