



## 39 Treeve Parkway WERRIBEE VIC

4 2 2

Surrounded by parks, walking & bike tracks, sits this modern & newly built home. Nestled in the booming Harpley Estate, this home offers an exclusive opportunity for first home buyers, upgraders and investors.

**Land Size** : 531 sqm

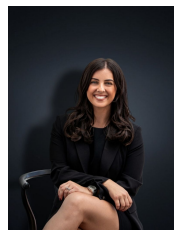
**View** : <https://www.ypa.com.au/7361340>

Proposed and set to open within the estate; a new Kindergarten & Catholic Primary School, Community Centre, Town Centre including Cafes, Restaurants, Medical Facilities and Gyms & Train Station; this family friendly community is sure to provide ample opportunities for many years to come.

Located only a 10 minute drive to Werribee CBD, walking distance to Schools, local Transport and shopping centres you are located in close proximity to well established facilities. The home offers:

Four bedrooms

Master bedroom with ensuite and walk in robe



**Kirsty Cunningham**  
0414 344 475