



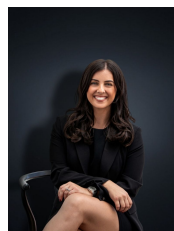
14 Eildon Avenue MANOR LAKES VIC

4 2 2

Living here is easy with this impressive, generously proportioned family home ideally positioned on a massive 837sq m block in the heart of Manor Lakes. Simply a short walk to Manor Lakes Shopping Centre (400m), Train Station (1.7km) and a short drive to Manor Lakes P-12 College (2.05km) and Iramoo Primary School (1.42km) this home sits amongst one of the most admirable locations that Manor Lakes has to offer.

The floor plan encompasses three spacious living zones, perfect for large families with both indoor and outdoor living spaces provided. A massive advantage is offered with unrestricted side access perfect for families with boats, trailers and campervans. The home itself offers:

Building Size : 24 sqm
Land Size : 837 sqm
View : <https://www.ypa.com.au/7361344>



Kirsty Cunningham
0414 344 475

Master with walk in robe and ensuite
 Three remaining bedrooms with built in robes